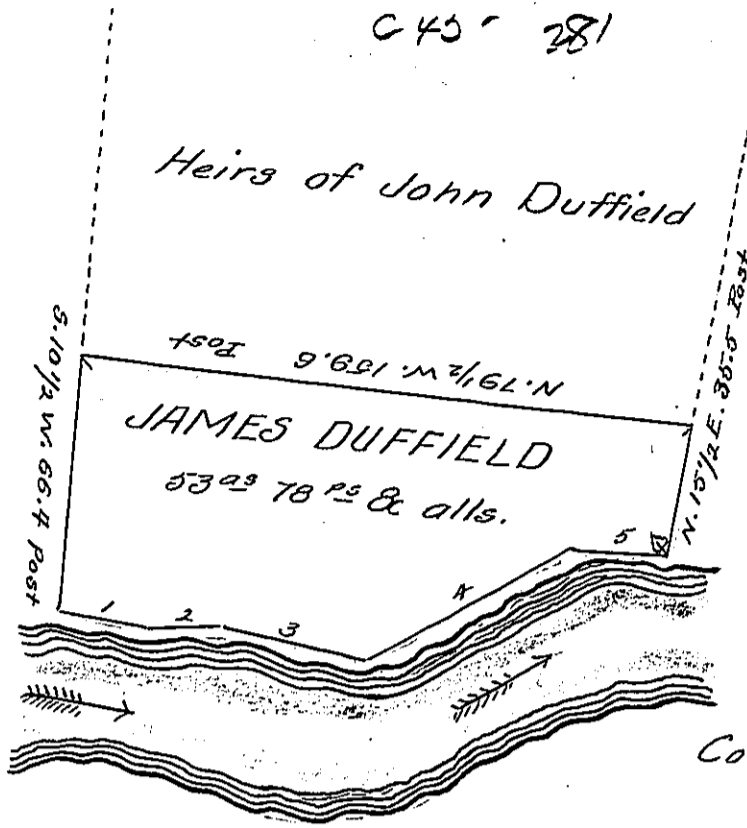


George Logone
C/130-44



Armstrong M^eQuaide
C/150-204

Courses & distances down
Creek from Post. Viz

- No 1 S. 77 E. 24
- " 2 S. 88 E. 20
- " 3 S. 71 E. 39
- " 4 N. 67 E. 61
- " 5 S. 82 E. 23 to
Birch tree thence by
A. M^eQuaide &c.

Draft of a tract of land situate in Canal Township, Venango
County, West of the Alleghany River, North and East of and
adjoining French Creek.

Surveyed June 13th 1864 for James Duffield on the
settlement and improvement of John Duffield & others.

W^m Hilands

Hon. James P. Barr

C. S.

Surveyor General

IN TESTIMONY that the above is a copy of the original remaining on file in
the Department of Internal Affairs of Pennsylvania, made
conformably to an Act of Assembly approved the 16th day of
February, 1833, I have hereunto set my Hand and caused
the Seal of said Department to be affixed at Harrisburg,
this twenty-seventh day of June 1904.

Isaac R. Brown
Secretary of Internal Affairs.